



Welcome to CAPITAL HEALTH Hospital Group
Berlin – Germany

WHERE EXPERTISE MEETS EXPERIENCE

CAPITAL HEALTH

Hospital Group



International Office of CAPITAL HEALTH Hospital Group

Phone +49 30 / 32 79 80 92 20

Fax +49 30 / 32 79 80 97

e-mail international@capital-health.org

Internet www.citypraxen.de
www.capital-health.org
www.medicin-germany.ru
www.zahnarzt-implantat-zentrum.de
www.radio-strahlentherapie.de

Working hours Monday - Friday: 9:00 am - 03:00 pm
Saturday/Sunday: closed

Dear patient,

The CAPITAL HEALTH Hospital Group is a modern multidisciplinary medical facility, which provides patients with high quality medical care in a soothing environment. Our quality is based on highly competent physicians and specialists with years of experience and the latest developments in medical technology. Our competence is based on networking, experience and lifelong learning of our employees and physicians. Diagnostics, treatments and follow-ups are closely matched up on each other and remain so throughout the recovery in the hands of our specialists.

We speak German, English, Russian, and Arabic.



In this information brochure you will find all important information about us.

Best regards,
INTERNATIONAL Office
CAPITAL HEALTH Hospital Group

Our contact details

Phone	+49 30 / 32 79 80 92 20
Fax	+49 30 / 32 79 80 97
e-mail	international@capital-health.org

Locations of CAPITAL HEALTH Hospital Group

Out-Patient Treatments

Location Friedrichstrasse

The interdisciplinary health centre CityPraxenBERLIN is located in the famous Friedrichstrasse. With more than 38 experienced specialists CityPraxen^{BERLIN} (www.citypraxen.de) provides excellent out-patient diagnostics and treatments in all disciplines.



Book online – easy and quick with transparent prices: www.capital-health.de

Locations of CAPITAL HEALTH Hospital Group

Out-Patient Treatments

Location Karl-Marx-Allee

The Ärztezentrum Friedrichshain (Medical Centre Friedrichshain) is located near historic Alexanderplatz and has following out-patient treatment centres:

Dental Centre www.zahnarzt-implantat-zentrum.de

Centre for Radiotherapy www.radio-strahlentherapie.de



Karl-Marx-Allee 90 A
10243 Berlin-Friedrichshain



U5 U5 Weberwiese 240 Bus 240 347 Bus 347 -- ca. 650 m Ostbahnhof
P Tiefgarage 80 Cent / Stunde

Book online – easy and quick with transparent prices: www.capital-health.de

Profile of CAPITAL HEALTH Hospital Group

Out-Patient Diagnostics and Treatments

We offer extensive diagnostic packages for all disciplines (internal medicine, cardiology, allergy, gastroenterology with colonoscopy and gastroscopy, angiology, surgery, dermatology, gynaecology, urology, immunology, plastic surgery, orthopaedics, proctology, radiology incl. open MRI, etc.)



For more information please see

www.citypraxen.de

www.capital-health.org

www.medicin-germany.ru

www.zahnarzt-implantat-zentrum.de

www.radio-strahlentherapie.de

Locations of CAPITAL HEALTH Hospital Group

In-Patient Treatments

In-patient treatments are carried out inter alia in the following cooperation hospitals:



Hospital Havelhöhe

www.havelhoehe.de

Hospital Franziskus

www.franziskus-berlin.de

Hospital Waldfriede

www.krankenhaus-waldfriede.de

Hospital Hygiea

www.klinik-hygiea.de

Hospital Ernst von Bergmann

www.klinikum-ernst-von-bergmann-potsdam.de

University Hospital Magdeburg

www.med.uni-magdeburg.de/Kliniken.de

Profile of CAPITAL HEALTH Hospital Group

In-Patient Treatments

We specialize in treatments of cancer, especially focusing on serious medical cases that are rejected in other hospitals because of their high complexity. Our focus is in oncology. Here we concentrate on well-tolerated therapies such as immune therapy, radiation therapy, brachytherapy and palliative therapy. These therapies are very mild for the patient.

Example therapy planning brachytherapy

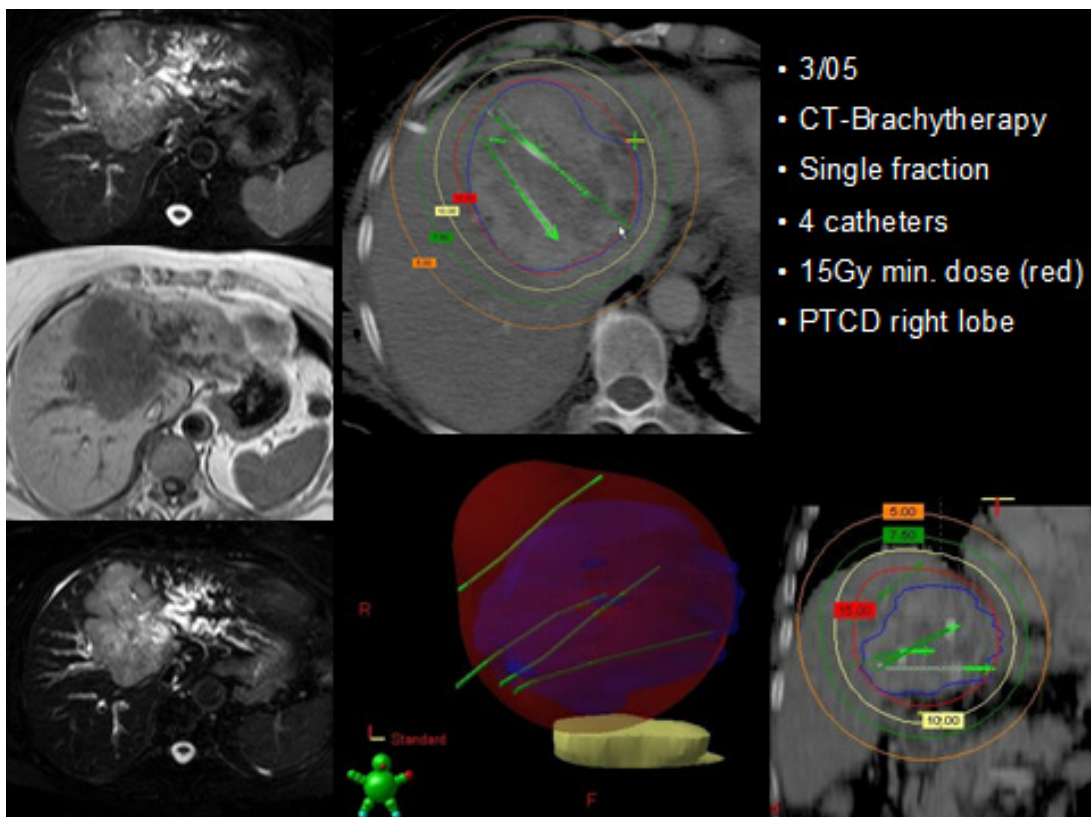


Image: Brachytherapy of liver cancer

Tumour board (Tumour conference)

Tumour boards are conferences which are held by our medical specialists from various fields. Tumour boards discuss interdisciplinary oncological or haematological illness histories and results, and give on request also second opinions about tumour diseases with complex issues.

Our interdisciplinary medical team



Heinz R. Zurbrugg, MD, PhD
Specialist in Heart Surgery
Specialist in Surgery
Specialist in Oncological Surgery



Geetha Sreenivasa, MD
Specialist in Radiotherapy



Andreas Josting, MD, PhD
Specialist in Gastroenterology
Specialist in Internal Medicine
Specialist in Haematology, Hematoon-
cology



Katja Förster, MD
Specialist in Gastroenterology



Harald Enzmann, MD, PhD
Specialist in Allergology
Specialist in ENT



Jörg Schüller, MD, PhD
Specialist in Urology
(Andrology)



Anett Boschnakow, MD
Specialist in Dermatology



Dirk Beyer
Specialist in Dermatology
Specialist in Proctology



Susanne Schulz, MD
Specialist in Cardiology
Specialist in Internal Medicine
Specialist in Angiology

Michael Matthias, MD, PhD
Specialist in Internal Medicine
Specialist in Haematology,
Hematooncology and Oncology

Our Success Stories

Giant Tumour of the Pelvis the Case of a 34-Year-Old Patient



Tumour of the pelvis before and after the surgery

The patient had four previous operations. Before treatment at CAPITAL HEALTH, she was rejected at six renowned university hospitals for further treatment (2 x in the US, 1 x in France, 1 x in England, 1 x in Holland, and 1 x in Germany).

In 2003, the diagnosis of a malignant cartilaginous bone tumour (chondrosarcoma) was determined. The origin was located in the right pubic bone of the pelvis. The slowly growing tumour was already in a very advanced stage. The doctors told the patient that conventional therapeutic options such as chemotherapy or radiation are not promising with this type of tumour. They recommended surgery as the only option, during which the right half of the pelvis would be removed and the right leg would be amputated. The patient was continuously refusing to accept this method until the tumour was no longer operable according to the criteria of conventional tumour surgery. This medical case was given up by the doctors. The patient arrived to Berlin in a poor state in September of 2008. We recommended a complex therapy concept consisting of intra-arterial chemotherapy and a following surgery. The tumour filled up practically the entire pelvis and there was an acute danger of intestinal obstruction. We have managed to remove the tumour which weighed more than 18 kg.

More detailed information on this case can be found on our site: www.citypraxen.de/riesentumor-des-beckens.

Many domestic and international media have reported on our success with this medical case:

Focus:

www.focus.de/gesundheit/ratgeber/krebs/krebsoperation-18-kilo-schwerer-tumor-entfernt_aid_392924

Süddeutsche Zeitung:

www.sueddeutsche.de/wissen/operation-kilogramm-schwerer-tumor-entfernt-1.406630

Die Welt:

www.welt.de/gesundheit/article3610422/Patientin-wiegt-37-Tumor-wiegt-18-Kilogramm

Huffington Post:

www.huffingtonpost.com/2009/04/24/40pound-tumor-removed-from-woman_191003

CBS News:

www.cbsnews.com/news/40-pound-tumor-removed-from-womans-hip

Daily Mail:

www.dailymail.co.uk/news/article-1173344/German-surgeons-remove-stone-tumour-Saudi-woman

Our Success Stories

Ameloblastoma of the Lower Jaw the Case of a 48-Year-Old Patient



Tumour of the lower jaw before and after the surgery

Before treatment at the CAPITAL HEALTH the patient has had six previous operations. This patient as well was rejected for further treatment at four university hospitals in England and Germany. A hospital in Germany was willing to perform the operation, but with the removal of the right eye.

Our surgeons at the CAPITAL HEALTH made it possible to operate the patient without having to remove the eye. In another planned minor operation, the hanging mouth corner was also corrected.

Our Success Stories

Pseudomyxoma Peritonei the Case of a 56 -Year-Old Patient



Peritoneal tumour before and after the surgery

This 56-year-old patient was operated previously four times and also was rejected for further treatment at two university hospitals in Saudi Arabia and England. Our highly qualified specialists have been able to remove the tumour and to considerably improve the life quality of the patient.

The successful treatment of such patients has given the CAPITAL HEALTH a reputation of a top clinic. More information about our other successful cases can be found here:

www.citypraxen.de/victorias-letzte-hoffnung

www.citypraxen.de/chondrosarkom-der-wirbelsaeule

Our Services

Check Internal Medicine (incl. Laboratory Examination)

- **Medical consultation:**

Evaluation of information of medical history and detailed examination of all important organs

- **Cardiovascular system:**

Blood pressure measurement, electrocardiography (ECG), 24-h ECG, 24-h blood pressure measurement

- **Lungs:**

Pulmonary function test, measurement of blood oxygen saturation

- **Organs:**

Ultrasonic examination of organs: bowel, liver, gall bladder, kidneys, pancreas, spleen, visceral artery and lymph node regions, thyroid

- **Blood test:**

General: small blood count, reticulocyte count, reticulocytes haemoglobin, ferritin, glucose, glycated haemoglobin (HbA1c), CRP, TSH, fT3, fT4, INR Quick, GOT, GPT, gamma-GT, AP, lipase, cholinesterase, creatinine, urea, uric acid, cholesterol, HDL-cholesterol, LDL-cholesterol, triglyceride, Lp, total protein, sodium, potassium, calcium, inorganic phosphate, magnesium, zinc, selenium, copper, chloride, folic acid, vitamin B12, vitamin D3 1,25 (OH), vitamin D3 25 (OH), LH (women only), oestrogen, testosterone, androgen index (SHBG), chlamydia trachomatis antibodies, helicobacter antibodies

Diagnostic evaluation of Hepatitis (A,B,C): hepatitis A antibodies, Anti-HBc, Anti-HBs, HB-Ag, HCV antibodies

Additionally tumour markers for women: CA 15-3, CEA (breast cancer, colon cancer, lung cancer)

Additionally tumour markers for men: f-PSA, PSA, CEA (prostate cancer, colon cancer, lung cancer)

- **Stool:** M2 – PKLH test (colorectal cancer)

- **Urine:** Urinary status, urinary sediment

- **Medical report**

Price: 1.898,26 €

Further services you can find on our online booking page www.capital-health.de

Our Services

Check Cardiology 1 incl. Internal Medicine (incl. Laboratory Examination)

- **Medical consultation:**

Evaluation of information of medical history and detailed examination of all important organs

- **Cardiovascular system:**

Blood pressure measurement, electrocardiography (ECG), 24-h ECG, 24-h blood pressure measurement, echocardiography, color-coded Doppler sonography (Doppler imaging) of the carotid arteries for stroke prevention

- **Lungs:**

Pulmonary function test, measurement of blood oxygen saturation

- **Organs:**

Ultrasonic examination of organs: bowel, liver, gall bladder, kidneys, pancreas, spleen, visceral artery and lymph node regions, thyroid

- **Blood test:**

General: small blood count, reticulocyte count, reticulocytes haemoglobin, ferritin, glucose, glycated haemoglobin (HbA1c), CRP, TSH, fT3, fT4, INR Quick, GOT, GPT, gamma-GT, AP, lipase, cholinesterase, creatinine, urea, uric acid, cholesterol, HDL-cholesterol, LDL-cholesterol, triglyceride, Lp, total protein, sodium, potassium, calcium, inorganic phosphate, magnesium, zinc, selenium, copper, chloride, folic acid, vitamin B12, vitamin D3 1,25 (OH), vitamin D3 25 (OH), LH (women only), oestrogen, testosterone, androgen index (SHBG), chlamydia trachomatis antibodies, helicobacter antibodies

Diagnostic evaluation of Hepatitis (A,B,C): hepatitis A antibodies, Anti-HBc, Anti-HBs, HB-Ag, HCV antibodies

Additionally tumour markers for women: CA 15-3, CEA (breast cancer, colon cancer, lung cancer)

Additionally tumour markers for men: f-PSA, PSA, CEA (prostate cancer, colon cancer, lung cancer)

- **Stool:** M2 – PKLH test (colorectal cancer)

- **Urine:** Urinary status, urinary sediment

- **Medical report**

Price: 2.071,57 €

Further services you can find on our online booking page www.capital-health.de

Our Services

Check Cardiology 2 incl. Internal Medicine (incl. Laboratory Examination)

- **Medical consultation:**

Evaluation of information of medical history and detailed examination of all important organs

- **Cardiovascular system:**

Blood pressure measurement, electrocardiography (ECG), 24-h ECG, 24-h blood pressure measurement, cardiac stress test, color-coded Doppler sonography (Doppler imaging) of the carotid arteries for stroke prevention

- **Lungs:**

Pulmonary function test, measurement of blood oxygen saturation

- **Organs:**

Ultrasonic examination of organs: bowel, liver, gall bladder, kidneys, pancreas, spleen, visceral artery and lymph node regions, thyroid

- **Blood test:**

General: small blood count, reticulocyte count, reticulocytes haemoglobin, ferritin, glucose, glycated haemoglobin (HbA1c), CRP, TSH, fT3, fT4, INR Quick, GOT, GPT, gamma-GT, AP, lipase, cholinesterase, creatinine, urea, uric acid, cholesterol, HDL-cholesterol, LDL-cholesterol, triglyceride, Lp, total protein, sodium, potassium, calcium, inorganic phosphate, magnesium, zinc, selenium, copper, chloride, folic acid, vitamin B12, vitamin D3 1,25 (OH), vitamin D3 25 (OH), LH (women only), oestrogen, testosterone, androgen index (SHBG), chlamydia trachomatis antibodies, helicobacter antibodies

Diagnostic evaluation of Hepatitis (A,B,C): hepatitis A antibodies, Anti-HBc, Anti-HBs, HB-Ag, HCV antibodies

Additionally tumour markers for women: CA 15-3, CEA (breast cancer, colon cancer, lung cancer)

Additionally tumour markers for men: f-PSA, PSA, CEA (prostate cancer, colon cancer, lung cancer)

- **Stool:** M2 – PKLH test (colorectal cancer)

- **Urine:** Urinary status, urinary sediment

- **Medical report**

Price: 2.244,89 €

Further services you can find on our online booking page www.capital-health.de

Our Services

Endoscopic Examinations: Esophagogastroduodenoskopie (EGD)

- **Gastroenterology 1, first consultation – final consultation: EGD**
Check former medical reports, general examination, comprehensive consultation, gastroduodenoscopy, medical report
- **Pathology gastroscopy biopsies**
- **Material costs fee intervention room:**
Fee intervention room, incl. disposable products
- **Material costs gastroscopy**
- **Monitoring (O2 + ECG) endoscopies**

Price: 1.032,77 €

Further services you can find on our online booking page www.capital-health.de

Our Services

Endoscopic Examination: Colonoscopy

- **Gastroenterology 2, first consultation – final consultation: colonoscopy**
Check former medical reports, general examination, comprehensive consultation, colonoscopy, medical report
- **Pathology gastroscopy biopsies**
- **Material costs fee intervention room:**
Fee intervention room, incl. disposable products
- **Material costs colonoscopy**
- **Monitoring (O2 + ECG) endoscopies**
- **Microecological diagnostics and therapy (stool flora analysis), profile 1**
 - Flora status
 - Immunological examination
 - Microscopic examination
 - Secretory IgA
 - Alpha-1 antitrypsin
 - Pancreatic elastase
 - Quantitative determination of fat, starch, protein, water, sugar

Price: 1.405,70 €

Further services you can find on our online booking page www.capital-health.de

Our Services

Endoscopic Examination: Gastroscopy/Colonoscopy

- **Gastroenterology 3, first consultation – final consultation: gastroscopy/colonoscopy**
Check former medical reports, general examination, comprehensive consultation, colonoscopy, medical report
- **Pathology gastroscopy biopsies**
- **Pathology colonoscopy biopsies**
- **Material costs fee intervention room:**
Fee intervention room, incl. disposable products
- **Material costs gastroscopy/colonoscopy**
- **Monitoring (O2 + ECG) endoscopies**
- **Microecological diagnostics and therapy (stool flora analysis), profile 1**
 - Flora status
 - Immunological examination
 - Microscopic examination
 - Secretory IgA
 - Alpha-1 antitrypsin
 - Pancreatic elastase
 - Quantitative determination of fat, starch, protein, water, sugar

Price: 2.087,87 €

Further services you can find on our online booking page www.capital-health.de

Our Services

Radiological Diagnostics

The MRI machine in the CityPraxen Berlin is an open 1.5 Tesla MRI machine.



The open design allows easier access to the patient. You will not feel a sense of narrowness. The unit also has an extremely powerful computer which makes the examination noticeably shorter than usual. In addition, the MRI area is flooded with daylight.

MRI of whole body	1399.86 €
MRI of whole body + MR-Angiography of whole body	1733.16 €
MRI of head	1026.56 €
MRI of mamma	999.90 €
MRI of thorax / mediastinum	999.90 €
MRI of abdomen	999.90 €
MRI of spine (3 regions)	1066.56 €
MRI of 2 large joints	933.24 €
CT of head with contrast agent	626.60 €
CT of thorax	626.60 €
CT of abdomen + pelvis	704.00 €

Further services you can find on our online booking page www.capital-health.de

Additional Information

- Interview with our CEO, Heinz R. Zurbrügg, MD, PhD:
www.capital-health.org/news/interview-ceo-capital-health-hospital-group
- Video about a tumour removal surgery of a 12-year-old girl (in German):
www.citypraxen.de/victorias-letzte-hoffnung
- Information about therapy of hepatitis C with medicaments which don't include interferon:
www.gastroenterologie-berlin-mitte.de/hepatitis-c-interferonfreie-therapie

Visit our online booking page – www.capital-health.de

You will find here comprehensive information about our services and prices!



International Office of CAPITAL HEALTH Hospital Group

Phone +49 30 / 32 79 80 92 20

Fax +49 30 / 32 79 80 97

e-mail international@capital-health.org

Working hours Monday - Friday: 9:00 am - 03:00 pm
Saturday/Sunday: closed

CAPITAL HEALTH

Hospital Group



International Office of CAPITAL HEALTH Hospital Group

Phone +49 30 / 32 79 80 92 20

Fax +49 30 / 32 79 80 97

e-mail international@capital-health.org

Internet www.citypraxen.de
www.capital-health.org
www.medicin-germany.ru
www.zahnarzt-implantat-zentrum.de
www.radio-strahlentherapie.de

Working hours Monday - Friday: 9:00 am - 03:00 pm
Saturday/Sunday: closed